

bandecho.de

DC 300 E

Dynacord

Organ Cabinet DC 300 E

2 × 120/80 watts for the bass/middle and the treble range.

2 separate mixable and adjustable input channels.

1 effects channel with space sound for organ.

1 channel (dead) for simultaneous connection of electropiano, stringensemble, and electronic rhythm unit.

Built-in reverberation, switchable to one of the two channels.

Treble reproduction by mechanical rotor system and pressure-chamber horn.

Bass/middle reproduction by electronic space sound.

Compact construction allows easy transportation.

Width: 60 cms (23½ ins),
height: 85.5 cms (33½ ins)
depth: 48 cms (19 ins).

For the organist on stage or for the entertainer with his big one-man orchestra.

DC 300 E 2-channel organ cabinet entirely mixable

full of technical gags and great efficiency, this organ cabinet offers maximum facilities at minimum sizes.

Effects channel

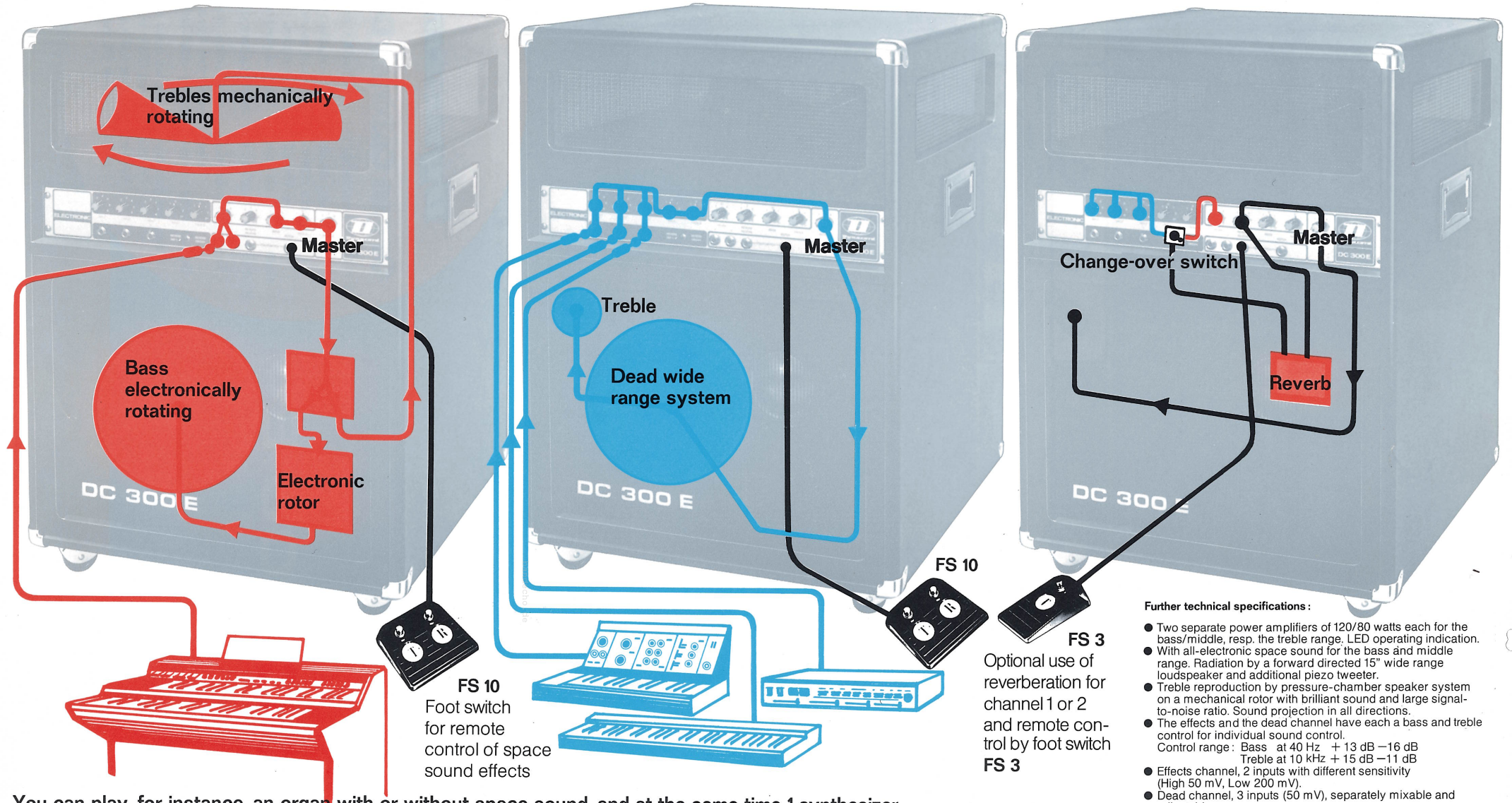
with 2 inputs (low + high)

Dead channel

with 3 separately adjustable inputs

Reverberation

large Hammond spring reverb system with selector switch



You can play, for instance, an organ with or without space sound, and at the same time 1 synthesizer, 1 stringensemble and 1 electronic rhythm unit, dead (without space sound effects).

Dynatron ELECTRONICS, INC.

P.O.-BOX 26038, PHILADELPHIA, PA. 1928

Further technical specifications :

- Two separate power amplifiers of 120/80 watts each for the bass/middle, resp. the treble range. LED operating indication.
- With all-electronic space sound for the bass and middle range. Radiation by a forward directed 15" wide range loudspeaker and additional piezo tweeter.
- Treble reproduction by pressure-chamber speaker system on a mechanical rotor with brilliant sound and large signal-to-noise ratio. Sound projection in all directions.
- The effects and the dead channel have each a bass and treble control for individual sound control.
Control range : Bass at 40 Hz + 13 dB -16 dB
Treble at 10 kHz + 15 dB -11 dB
- Effects channel, 2 inputs with different sensitivity (High 50 mV, Low 200 mV).
- Dead channel, 3 inputs (50 mV), separately mixable and adjustable.
- Combined master control for both channels.
- Frequency range : 30 ... 20000 Hz.
- Distortion factor : < 0.3%.
- Dimensions : 60 x 85,5 x 48 cms (23½ x 33½ x 19 ins).
- Weight : 65 kgs (143 lbs).
- 2 mains sockets for organ, piano etc.

bandechno.de

bandechno.de | Tim Frodermann